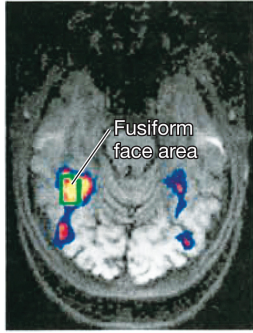


Intact Faces



Scrambled Faces

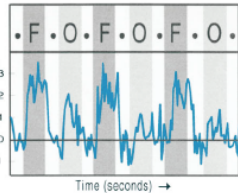
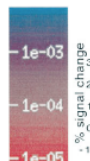
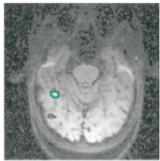


All photos from N. Kanwisher, 1997, *J Neurosci* 17:4302-4311.
© 1997 Society for Neuroscience

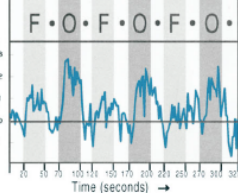
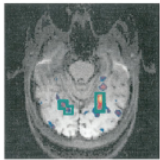
COGNITION 1c, Figure 2.6
© 2012 Oxford University Press

Kanwisher et al. (1997)

1a. Faces > Objects

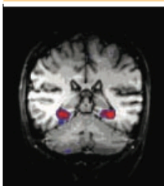


1b. Objects > Faces

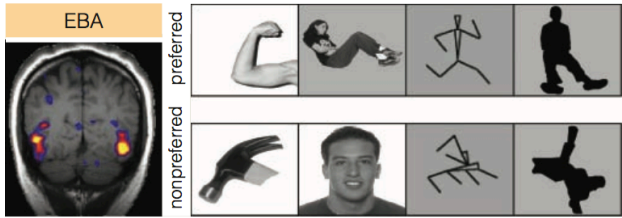


Kanwisher et al. (1997)

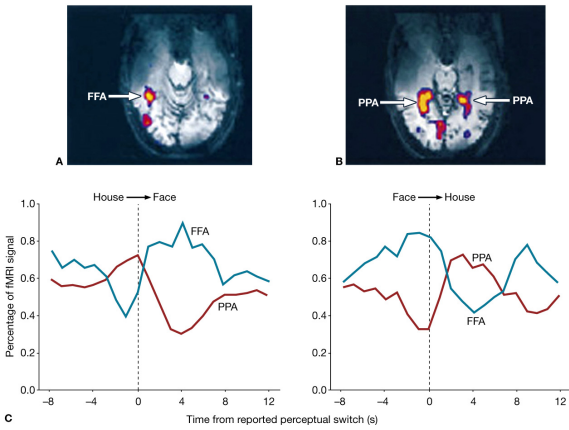
PPA



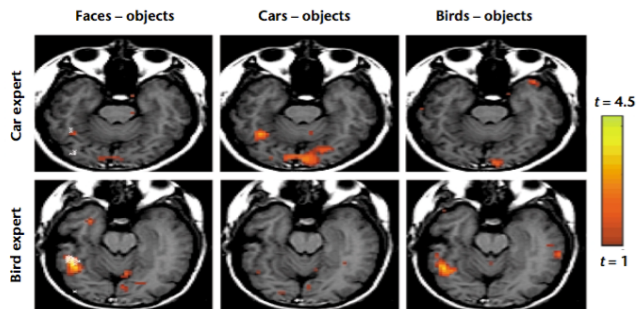
Aguirre et al. (1998)



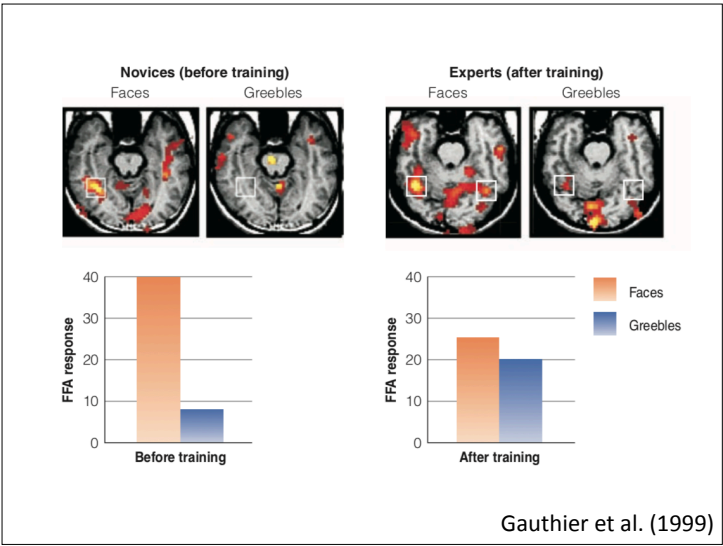
Downing et al. (2001)



Tong et al. (1998)



Gauthier et al. (2000)



Recent work suggests that functional localization is not such a fixed property of brain regions as either lesion studies or early neuroimaging work have suggested. Rather the accumulation of functional imaging data indicates considerable functional overlap in the neural correlates of a variety of cognitive functions, with most brain regions being involved. (Marshall & Fink, 2003)

